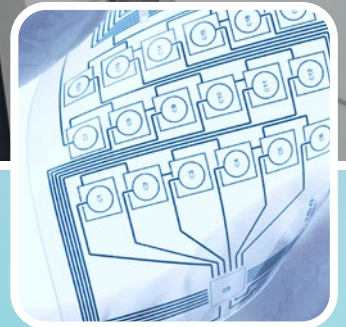
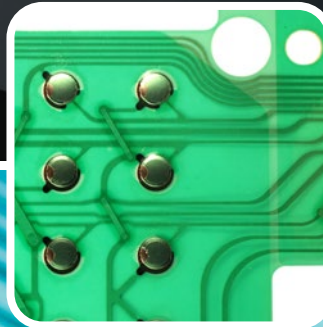




Flexible Electronics





Company

Since 1982 we are the partner who offers innovative solutions to our customers to satisfy the specific market's requirements. Thanks to our know-how and continued investments, we provide laser systems that guarantee significant performances in terms of cost, operational efficiency and final quality product.

Thanks to the complete range of laser systems developed by **our R&D department**, SEI Laser is able to satisfy the application needs of customers in both vertical and horizontal markets, including: Plastic Converting, Lighting, Visual Communication, Textile, Interior Design, Automotive, Graphic Arts, Converting, Labelling, Flexible Packaging, Folding Carton, Furnishing, Metal processing and Electronics.

VISION

*We work so that our innovative solutions help find new opportunities and new business for customers.
"Revolutionary Generation":
this is SEI Laser.*

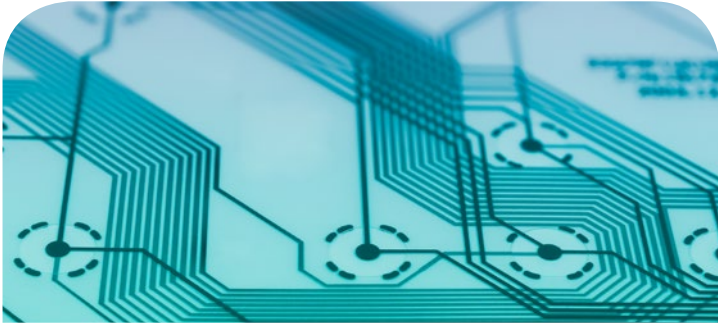




We produce our laser systems in **Italy** thanks to 5 departments (mechanical, electronic and optoelectronic, software, mechanical design and production) which follow all the stages of the production process. The software and firmware that control **SEI Laser** systems are developed by our Software R&D Department that satisfies the different customers' requests in real time.

A state-of-the-art technology requires commitment; our history is based on loyalty and mutual respect with customers. This alchemy enables us to establish strong connections with our customers which last for decades and constantly renewed.

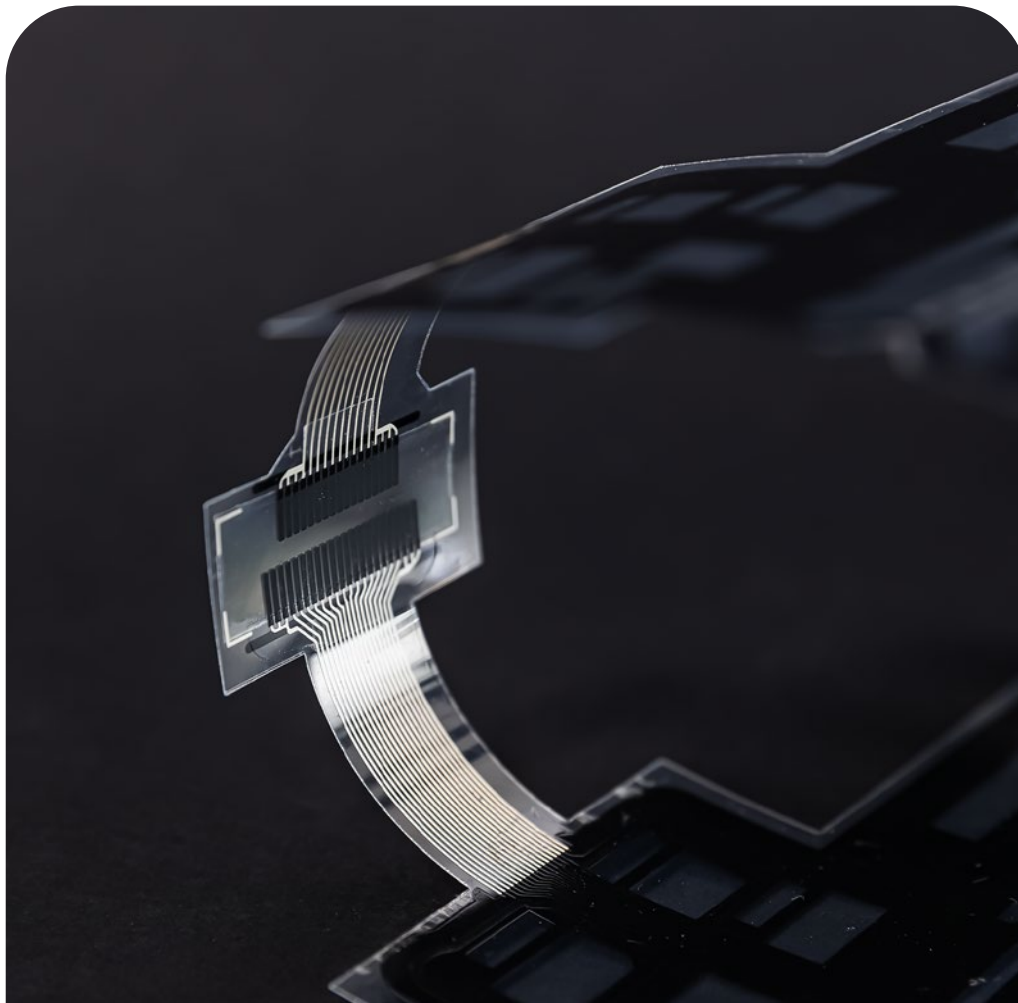




Flexible Electronics

The **flexible electronics** application field is as innovative as it is revolutionary. Now a days, it can be translated in the union of lightness, ductility and flexibility.

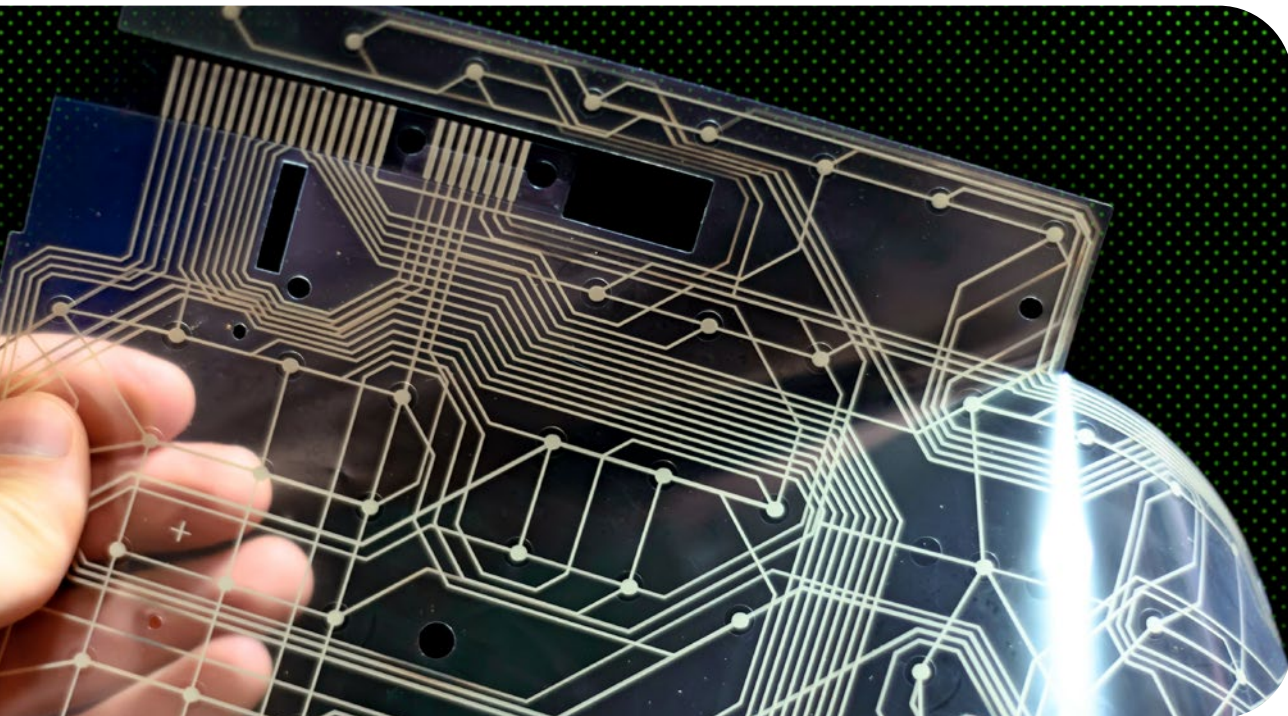
Throughout an unmatched production process, the creation of new generation electronic circuits such as tactile sensors, membrane switches, batteries, solar cells, luminescent films and RFID is extremely simplified. As a matter of fact, their reduced thickness, their incomparable sensitivity and their foldability make their use possible in the production, for example, of flexible displays and smart labels.

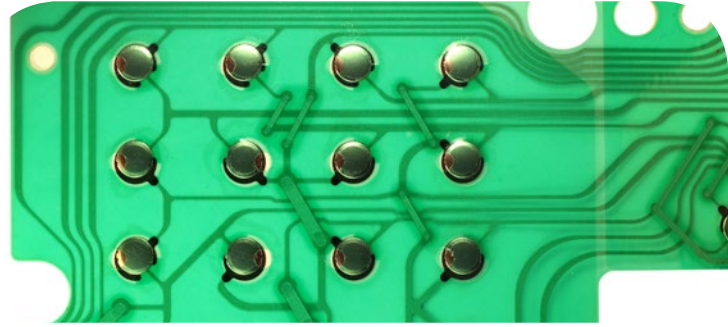
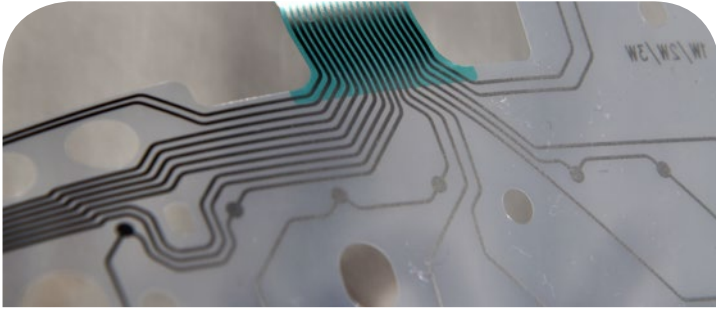




In this whole process, the CO₂ laser represents a key ally, as it is able to not thermally and mechanically impact the material, ensuring a contactless process, defined as “stress-free”.

SEI Laser plotter and galvo systems are ready to be integrated by ensuring a clean cutting process and delivering huge benefits in terms of quality and productivity, if compared to most traditional cutting technologies.





PLOTTER LASER SYSTEMS | Wide format

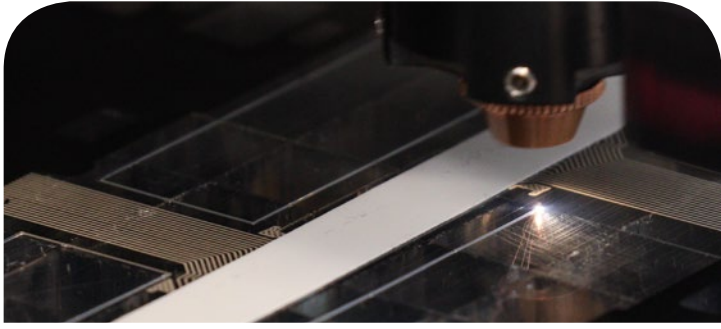
Mercury and **NRGL** are the two flatbed laser plotter systems developed by SEI Laser for the processing of plastic materials in rolls, sheets and foils.

Mercury allows the alternating loading and unloading of the materials to be processed: when a drawer is extracted, it makes the operator able to recover the processed material, while on the other drawer laser continues to process. Loading and unloading in masked time increase productivity: laser never stops and processes constantly.

Production time is therefore almost halved. The operation can be automatic and/or manual and it is possible to interface with automations or robotic systems.

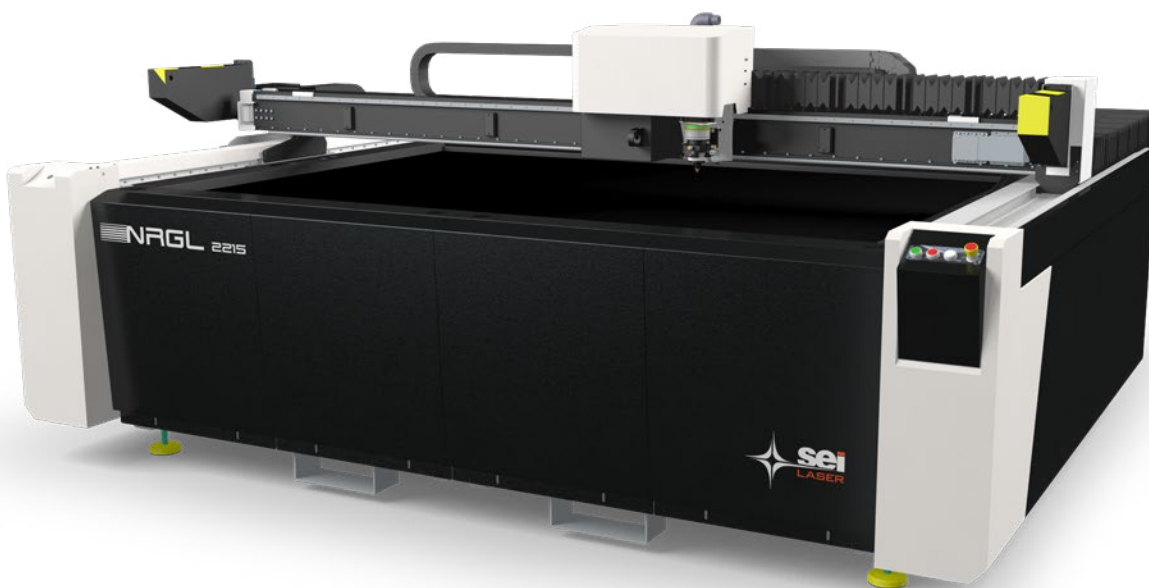
The operator is always safe: both **Mercury** and **NRGL** adopt the most advanced protection systems such as redundant interlocks and laser security scanners.





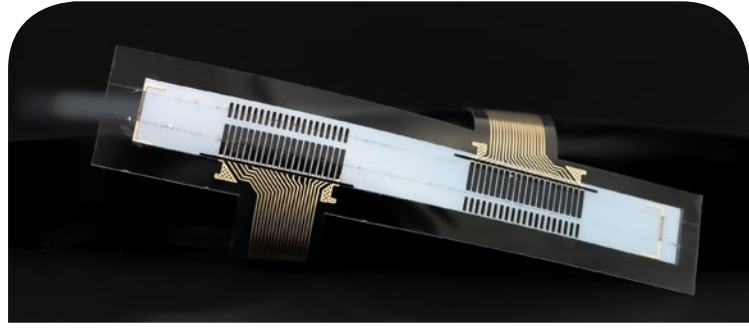
NRGL is the professional laser system for CO₂ laser cutting of materials with a working area up to 3200x2000 mm.

NRGL is a fixed table and mobile bridge system with cartesian axes X-Y and motorized Z axis. The conveyor is a plus and it can be configured for some roll materials processing.



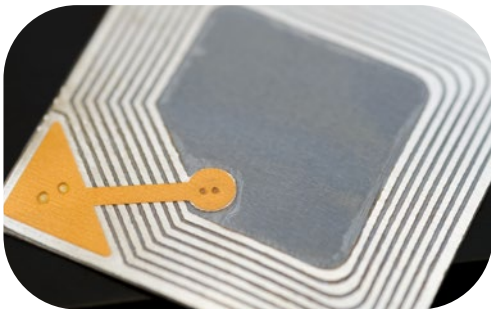
Mercury and **NRGL** are equipped with CCD chamber for Laser register processing and automatic file upload thanks to single or multiple print markers and 2D/3D barcode readers with RGB radial/perpendicular illumination.

NRGL high dynamic performances are guaranteed by the axis handling system with four brushless motors for the X-axis and a brushless motor for the Y-axis (interpolated), with SEI Laser digital control.



PLOTTER LASER SYSTEMS | Medium format

X-Type e H-Type are the two flatbed laser plotter systems developed by SEI Laser for the processing of medium-format sheets, foils or rolls of plastic materials.

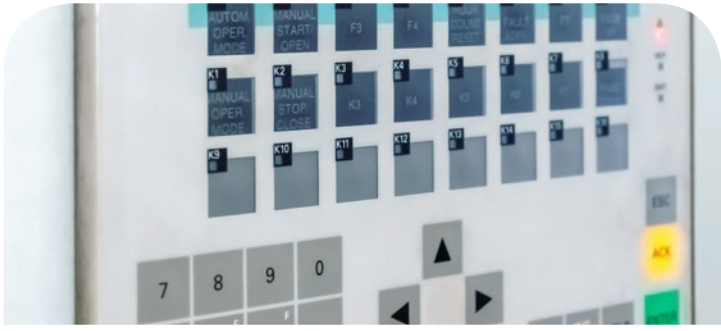


X-Type is the fastest professional laser system for CO₂ laser cutting on a working area up to 1600x1000mm. It adopts an X-Y axis handling system with double carbon fiber beam, equipped with four linear motors (two each axis) and position control via optical line.

X-Type sums up lightness, agility, speed, precision and power, which are guaranteed by several laser sources, available up to 500 W. Also, thanks to the possibility of using a double worktop that reduces both loading and unloading time of the material, this system has an extreme flexibility of use.



X-Type is characterized by high performances and acceleration: up to 4000 mm/s of speed and an acceleration up to 6g.



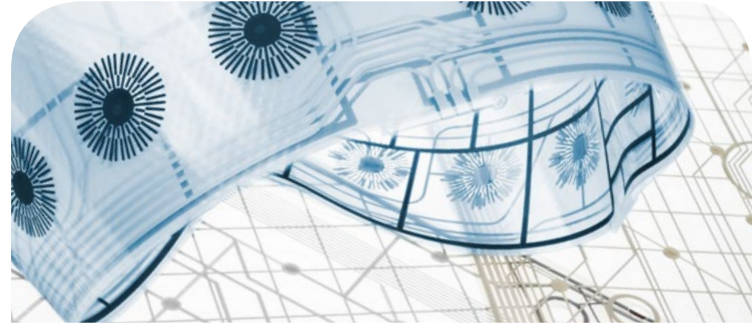
H-Type is the professional laser system for CO₂ laser cutting on a working area up to 1000x700mm. It adopts a system of handling X-Y axes which uses 4 brushless engines and sophisticated algorithms of interpolation of axes that guarantee an exceptional movement. Its accuracy is guaranteed by stability, robustness and rigidity of the handling structure fixed to a solid die-cast monoblock base.



H-Type is characterized by high performances and acceleration: up to 3000 mm/s of speed and an acceleration up to 4 g.



X-Type and **H-Type** are equipped with CCD camera for laser register processing and automatic file upload thanks to single or multiple print markers. The conveyor configuration is available for processing materials in roll.

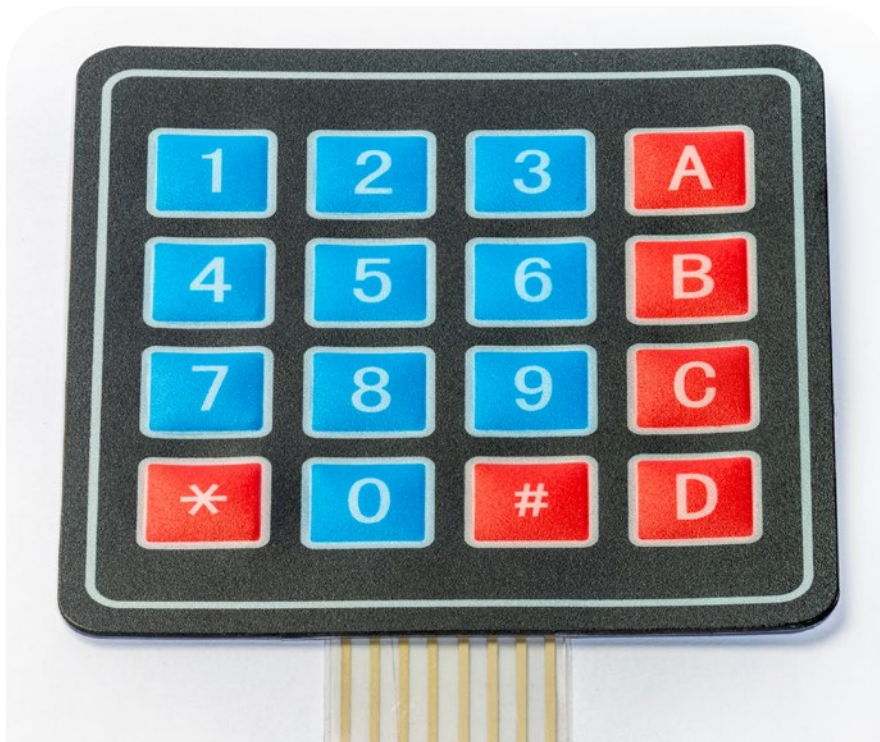


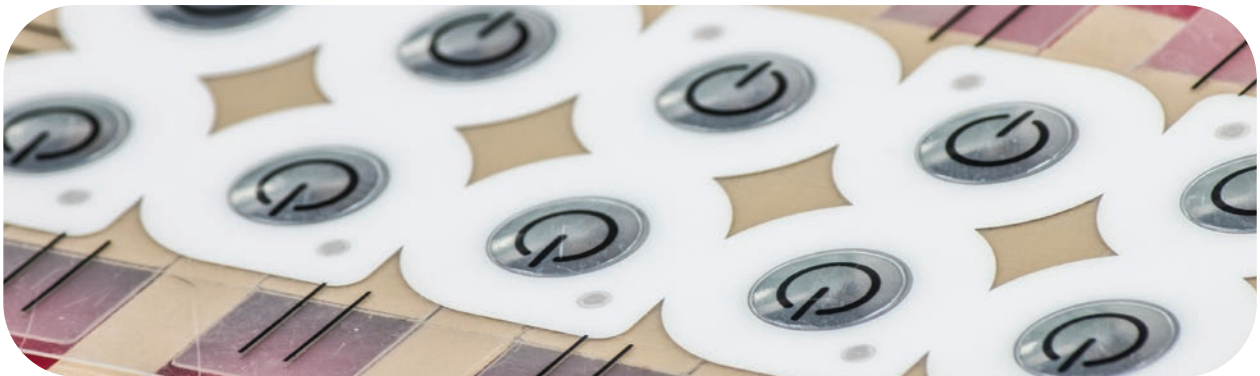
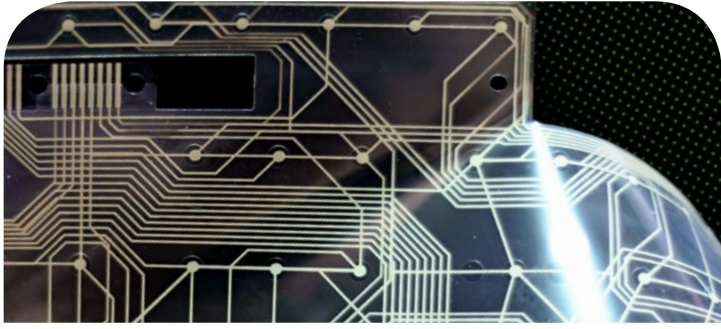
PLOTTER LASER SYSTEMS | Small format

Dragon e Eureka are the two flatbed laser plotter systems developed by SEI Laser for the processing of small-format sheets or foils of plastic materials.

Dragon is the professional laser system for CO₂ laser cutting of materials with a working area up to 700x500 mm.

Eureka is the professional laser system for CO₂ laser cutting of materials with a working area up to 610x460 mm.



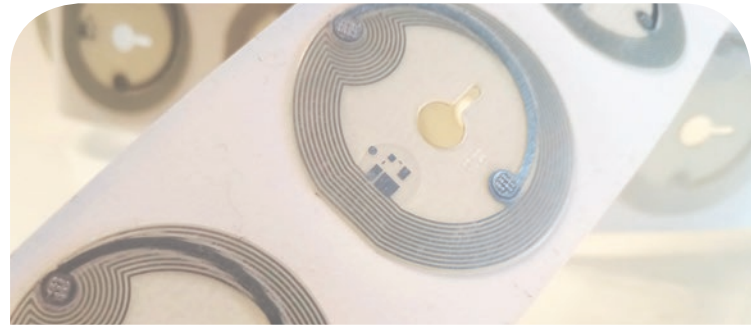
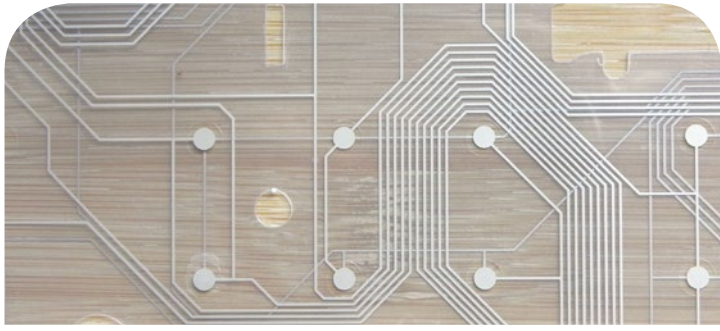


Dragon ed Eureka are compact, advanced and innovative CO₂ laser systems that guarantee a wide flexibility of use and high performances: up to 2000 mm/s of speed and 2 g of acceleration.



They adopt an X-Y axis handling system that uses micro-brushless motors and belt handling. They allow the processing of materials with dimensions greater than the working area (Y axis).

Both are equipped with the CCD camera for register laser processing and for automatic file upload, thanks to single or multiple print markers.



Infinity Line

Infinity Line laser systems are developed for kiss cutting, perforate and cutting sheets, foils, films and coupled plastic films, on a working area up to 700x700 mm.

They are equipped with a two-position rotary table that carries out loading and unloading operations in disguised time without stopping the production cycle, by increasing productivity.

The adoption of the revolutionary iEye vision system, which is integrated in the scanning head, allows the automatic centering of the processing, according to the actual position of the material to be processed.

The innovative scanner head iScan with "full digital" electronics, designed and manufactures by SEI Laser, guarantees the highest quality of the laser beam on the whole working area, while the adoption of a high performance dynamic beam expander, moved by the linear or galvanometric motor, ensures the fastest operations.



LabelMaster

LabelMaster is the most complete and professional modular roll-to-roll and roll-to-sheet system designed by SEI Laser.

This system combines the most innovative cutting technologies to meet the demands of manufacturers looking for higher performances and quality. **LabelMaster** is based on a concept of extreme modularity and flexibility: the various units can be combined according to customer's wishes and integrated at any time.

The QR-Code/Barcode reading system allows to change work on the fly, by ensuring a high productivity, avoiding setup times and drastically reducing time-to-market.

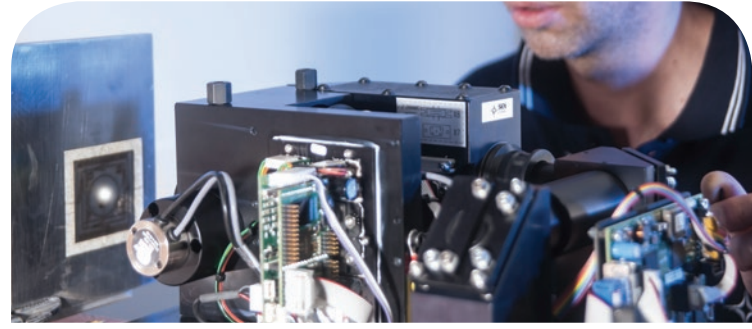
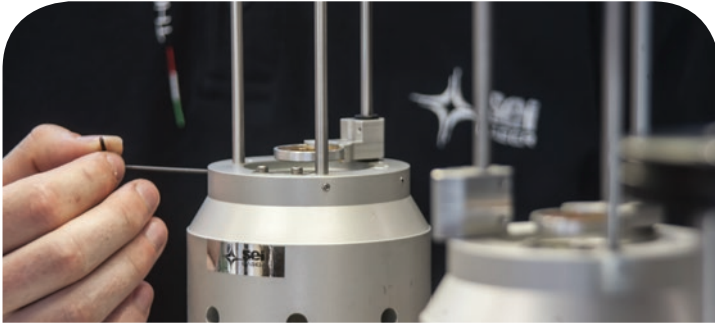
Using **LabelMaster** instead of traditional mechanical die-cutting methods implement a fully digital workflow from start to finish: from "PDF" to shipping.



LabelMaster is available in two configurations that make it the "best in class" solution for web processing with a width of 350 mm or 600 mm.

LabelMaster can be configured with 1 to 4 laser units of different power, from 150 to 500 W each, allowing to reach high laser cutting speeds.

The processing speed is kept constant thanks to the "traction control system" which guarantees perfect registration and high precision of the working process.



Why SEI Laser?

WE ARE THE LASER CHAMPIONS

With more than 40 years of experience we are pioneers in the design and manufacture of laser systems. SEI designs and builds our own scanning heads and electronic controls, from hardware to firmware to software.

With proprietary R&D expertise in laser and optics, SEI has full control over our systems and tune every system to meet each applications' needs, including labels...

We are not just laser integrators!

WE ARE DIGITAL

Every SEI Laser system can be integrated into automated digital control production processes, and it's in compliance with the Industry 4.0 certification. All SEI Laser systems are certified to satisfy the following requirements: control by CNC and / or PLC; interconnection with the company IT system thanks to remote loading of instructions and / or part program.

Thanks to the user-friendly human-machine interface, using SEI's lasers will be easy to learn, intuitive, and safe for any operator!

WE BELIEVE IN IMPORTANCE OF SERVICE SUPPORT

SEI Laser, thanks to its wide range of technical support services and its strong presence on all continents of the world, ensures a quick, effective and tailored response to the different customer needs. In addition to technical support on-site, SEI Laser offers a valued remote assistance. In real-time communication between SEI's engineers and the customer, allows the operator to be guided step by step in technical operations like personalization of the processing parameters or problem diagnostics and troubleshooting.



WE GUARANTEE THE BEST QUALITY ON THE MARKET

SEI guarantees the highest accuracy and precision through maximum control of the laser beam (4-axis system). Achieve the highest quality of cutting, kiss-cutting, marking and scoring without any material discoloration or burning and at highest processing speeds for maximum throughput.

WE HAVE THE LARGEST APPLICATIONS KNOWLEDGE

SEI Laser offers a complete range of laser solutions that can be configured with different options, interfaces and automation to meet specific market and application demands. Commercial print & graphic arts, LED backlight, folding carton, labels, metal processing, wood, flexible packaging, leather, plastic, denim & fashion, industrial and technical textile are some of the main markets and applications in which SEI has a wealth of experience and know-how.

WE CARE ABOUT THE ENVIRONMENT

With SEI's eco-friendly laser solutions, there's no longer any need to dispose of traditional dies, and material waste is reduced to the minimum.





SEI S.p.A.

Via R. Ruffilli, 1
24035 Curno (BG) - Italy
T. +39 035 4376016
F. +39 035 463843
info@seilaser.com

www.seilaser.com

SEI S.p.A.

Production site
Via San Cassiano, 2
24030 Mapello (BG) - Italy
T. +39 035 4376016
info@seilaser.com

www.seilaser.com

SEI Laser Converting

Via Praz dai Trois, 16
33030 Buja (UD) - Italy
T. +39 0432 1715827
F. +39 0432 1715828
info@seiconverting.it

www.seilaser.com

SEI Deutschland GmbH

Moosweg 9
D-82386 Huglfing - Germany
T. +49 8802 913600
F. +49 8802 9136066
info@seilaser.de

www.seilaser.de

SEI Laser France

Le Korner
17 Rue du Prof. Jean Bernard
69007 Lyon - France
T. +33 4 37 70 48 93
france@seilaser.com

www.seilaser.com/fr/

SEI Laser Latin America Industria e Comercio de Equipamentos LTDA

Rua Antonia Martins Luiz, 410,
CEP: 13347-404,
Distrito Industrial João Narezzi,
Indaiatuba San Paolo - Brasil
T. +55-(19)-3935-1550
T. +55-(19)-3935-2950
Whatsapp: +55-(19)-99350-4466
atendimento@seilatinamerica.com.br

seilatinamerica.com.br

SEI Laser Systems (SHAOXING) Co. Ltd.

N°128, Zheduan Road,
Pukou Development, Shengzhou,
Post Code 312400 Zhejiang - China
T. +86 575 83933766
F. +86 575 83933766
info@seilaserasia.com

www.seilaserasia.com

